

# GOLD DATA CENTER

---

10980 Gold Center Drive, Rancho Cordova, CA

# GOLD DATA CENTER



# GOLD DATA CENTER

## Bay Area to Gold Data Center



Copyright © 1988-2003 Microsoft Corp. and/or its suppliers. All rights reserved. <http://www.microsoft.com/streets>  
© Copyright 2002 by Geographic Data Technology, Inc. All rights reserved. © 2002 Navigation Technologies. All rights reserved. This data includes information taken with permission from Canadian authorities © 1991-2002 Government of Canada (Statistics Canada and/or Geomatics Canada), all rights reserved.

Confidential & Proprietary

# GOLD DATA CENTER

---

## MARKET SUMMARY

The Sacramento Metro market is the 27th largest in the country with a population of approx. 2.2 Million people. This market is larger than Las Vegas, Cincinnati, Cleveland, Kansas City, Austin and San Jose MSA (excludes SF & Oakland).

The Rancho Cordova area has the highest amount of telecommunications carriers and data centers in the Sacramento region, with over a dozen data & call centers within blocks. In addition, this area is outside the 500 year flood zone, and has much less seismic activity than the bay area and coastal communities.

# GOLD DATA CENTER

---

## KEY BUILDING INFORMATION

29,410 Square Foot Single Story Building

Former Data Center – Built to 1.5 Importance Factor

3000 KVA Total Power - Feeds from Dual Substations

Over 10 Fiber Providers at Property Line

20 Foot Clear Height

Beautiful Glass-Walled Offices

Data Center Neighborhood

No Competing Product Currently

# GOLD DATA CENTER



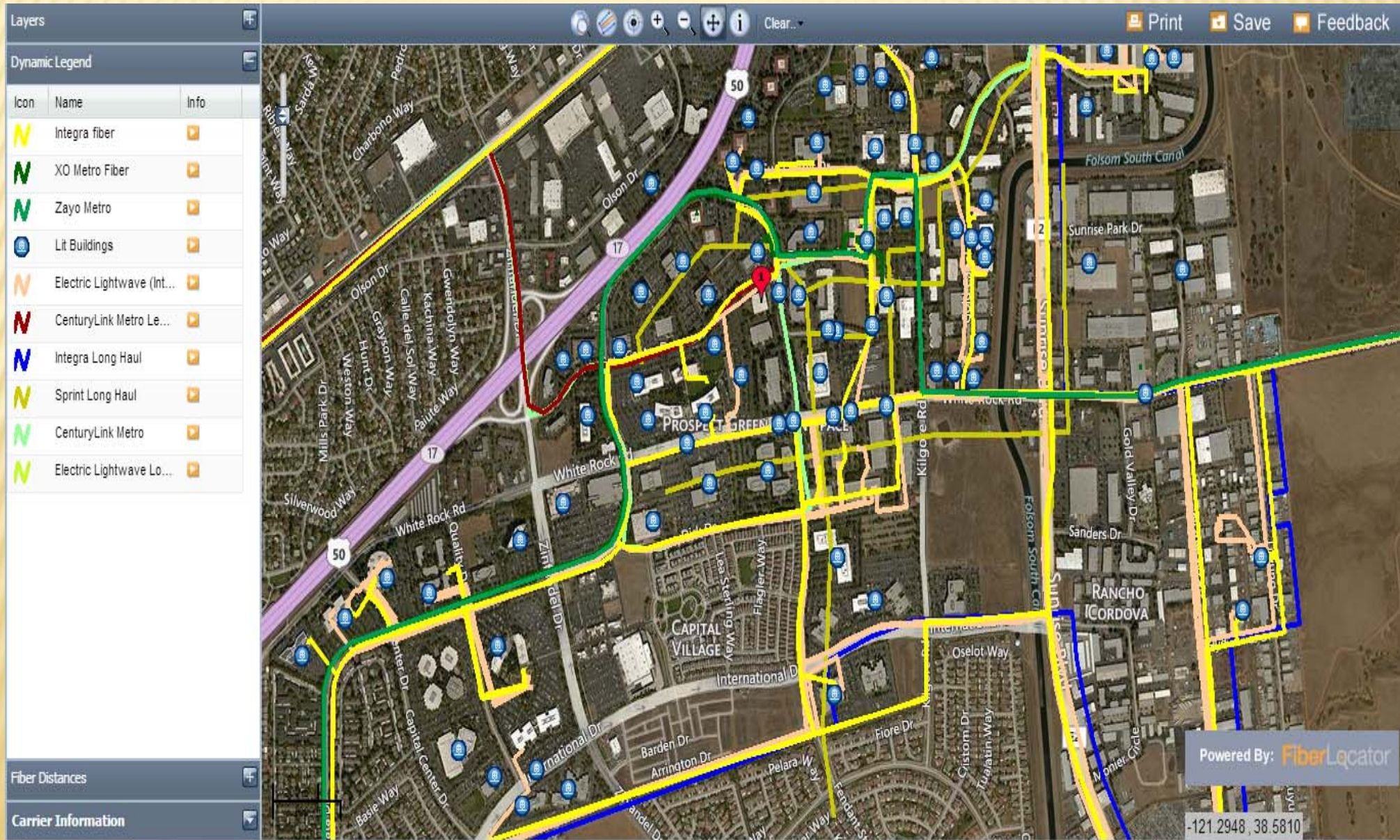
Confidential & Proprietary

# GOLD DATA CENTER



# GOLD DATA CENTER

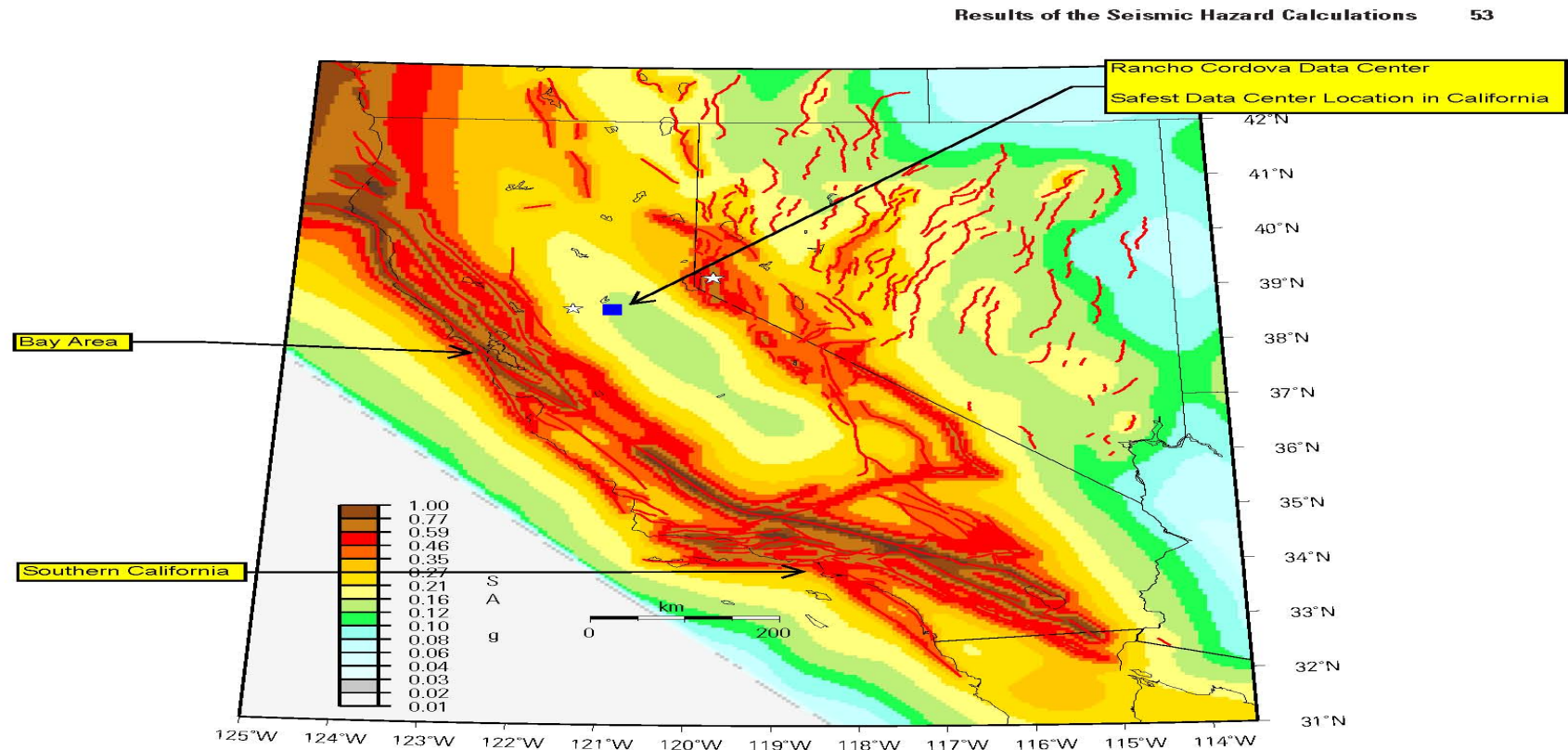
## AREA FIBER MAP





# GOLD DATA CENTER

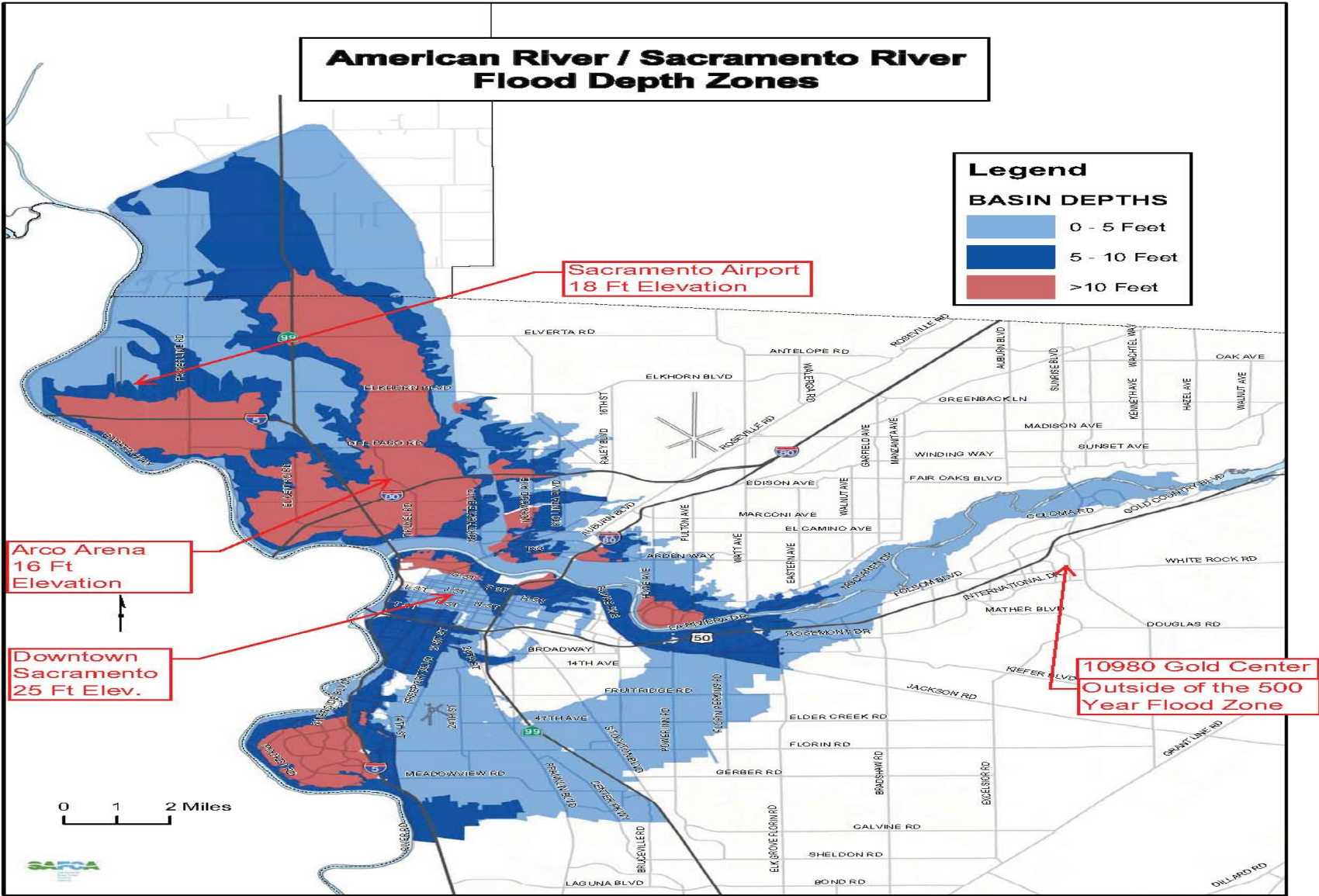
## CALIFORNIA SEISMIC MAP - Much Less Seismic Activity than Bay Area



**Figure 40.** Map of 1-hertz spectral acceleration (SA) for 2-percent probability of exceedance in 50 years in California in standard gravity (g). Red lines are fault sources used in the model.

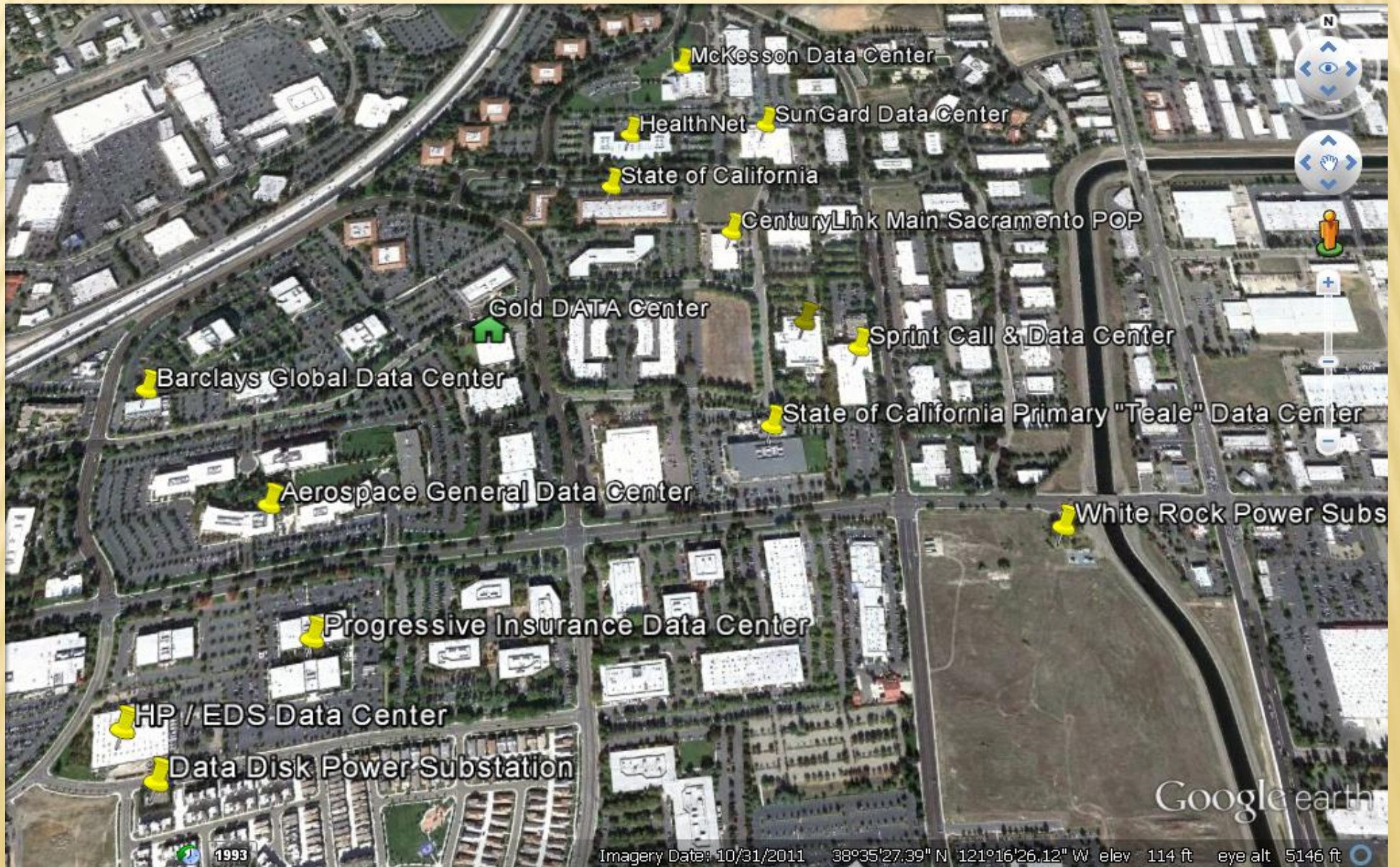
# GOLD DATA CENTER

## SACRAMENTO FLOOD MAP - Retail Competitors in Sacramento in Flood Zone



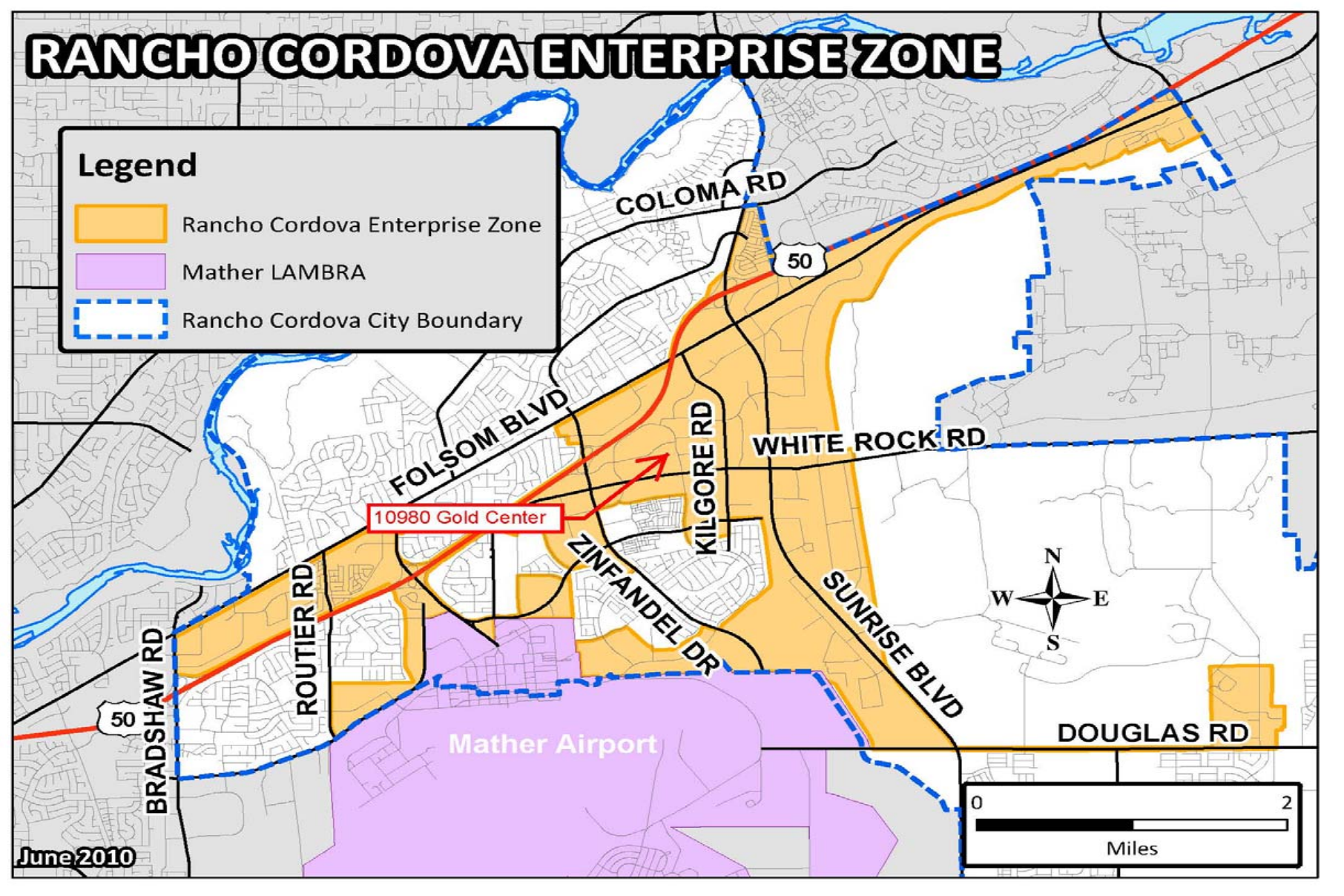
# GOLD DATA CENTER

## AREA DATA CENTER MAP



# GOLD DATA CENTER

## ENTERPRISE ZONE MAP FOR INCENTIVES



# GOLD DATA CENTER

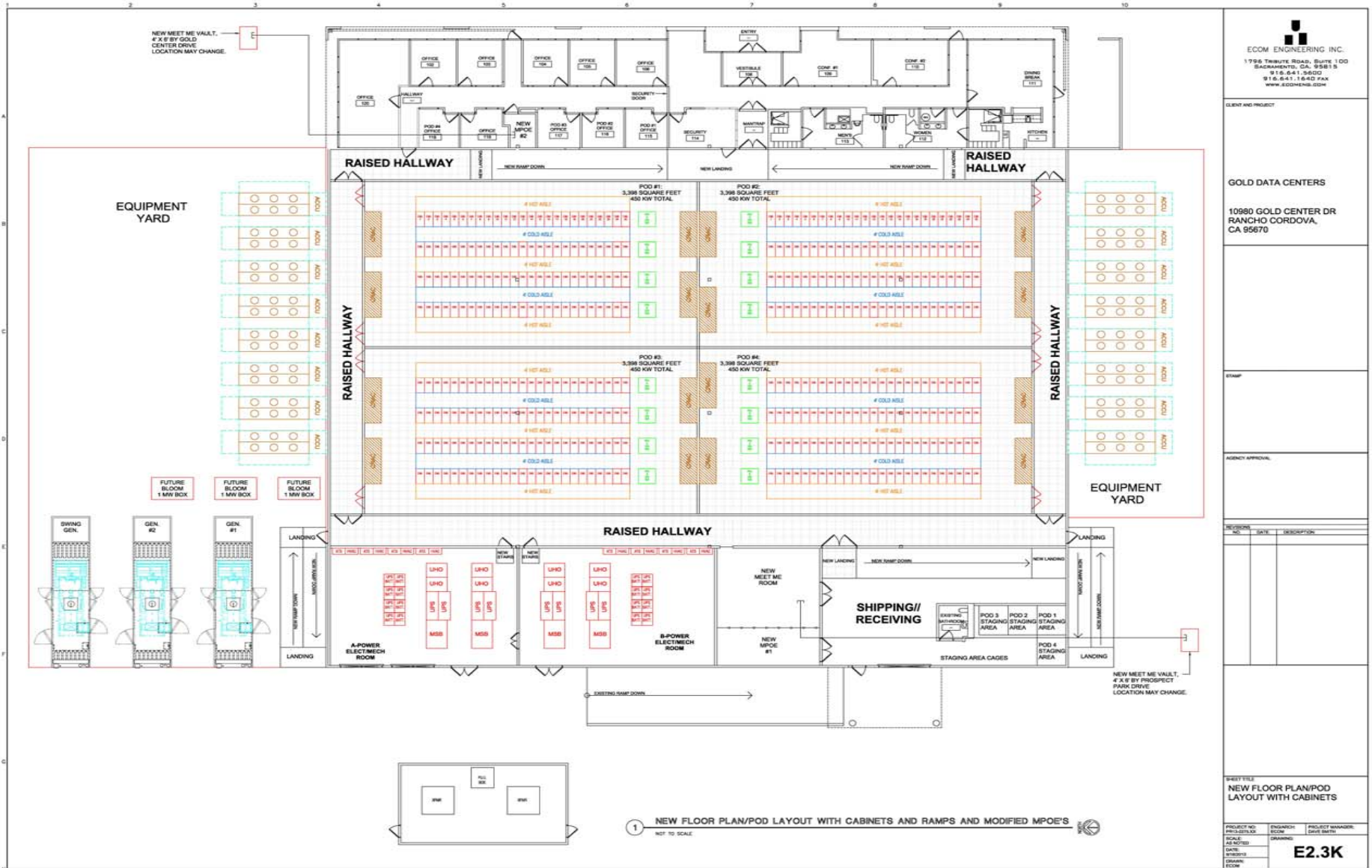
---

## DEVELOPMENT & CONSTRUCTION STRATEGY

- Mini-Wholesale Data Center Concept
- Four Hard-Walled and Secured Pods
- Each Pod is 450 KW and Approx. 3200 SF
- 1800 KW Total IT Load @ 2N Power & N+1 Mechanical
- Each Pod has access to an Executive Office & Storage Area
- Pods to be Built by Demand, Scaling CapEx Cost
- Permitted Prior to July 1, 2014 when Title 24 is Enacted

# GOLD DATA CENTER

## DEVELOPMENT & CONSTRUCTION PLAN – 4 PODS



# GOLD DATA CENTER

## OUR PROJECT & AREA DATA CENTER MAP

